

## Repair Hasp Driver and Reinstallation



This tutorial will instruct you on how to safely reinstall the Hasp Driver if your initial installation crashed your computer.

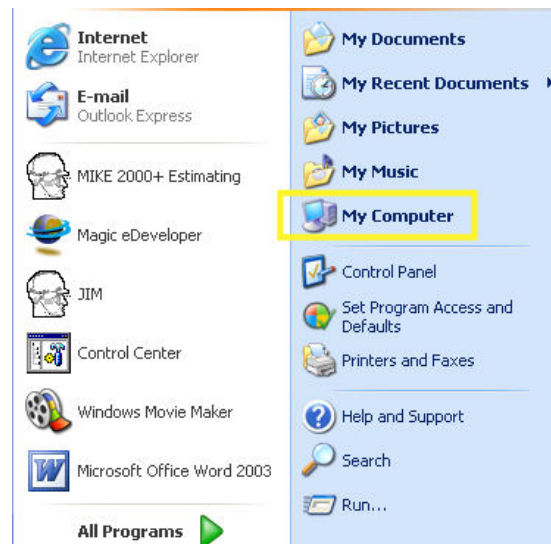
Once your computer has restarted remove the CD from the drive.



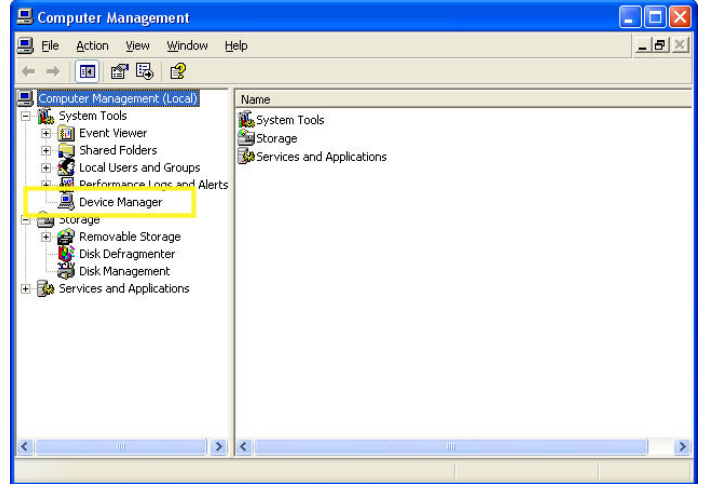
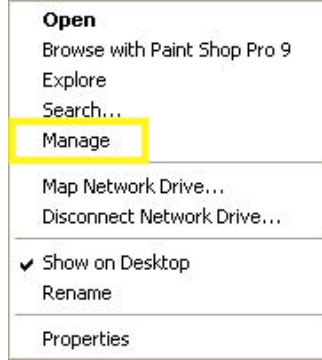
Now you will need to disable the drivers so you can completely remove them. First click the start button.



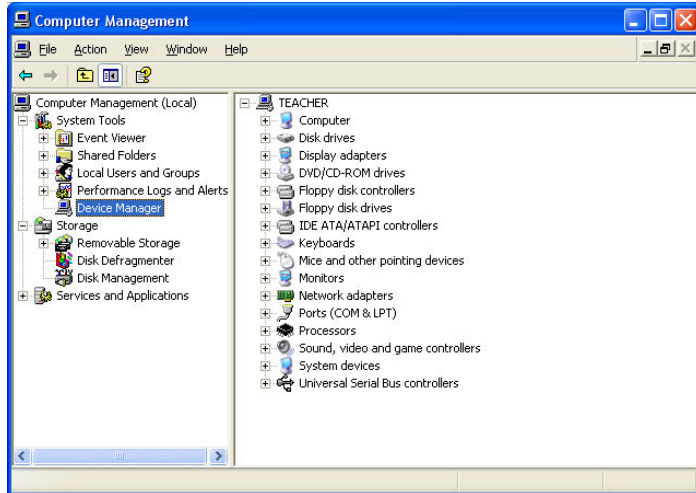
You should see “My Computer”, right click on it and you will see a pop up menu.



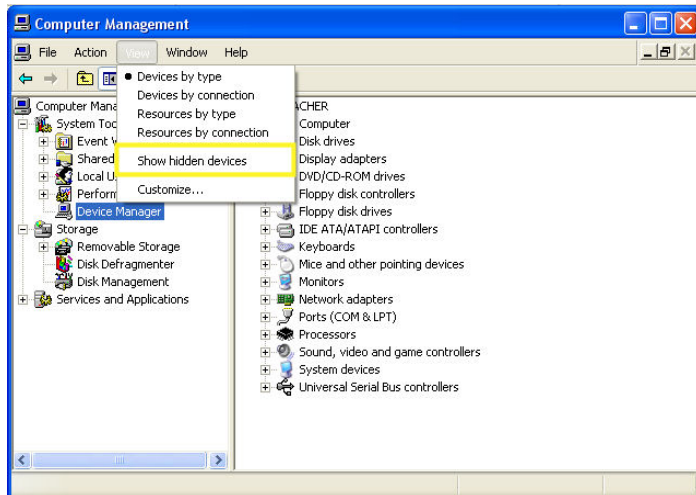
Click on “Manage” and this will bring up the Computer Manager window. Here you will want to click on “Device Manager” on the left side of the window.



Now you will see a list of all your devices on the right.

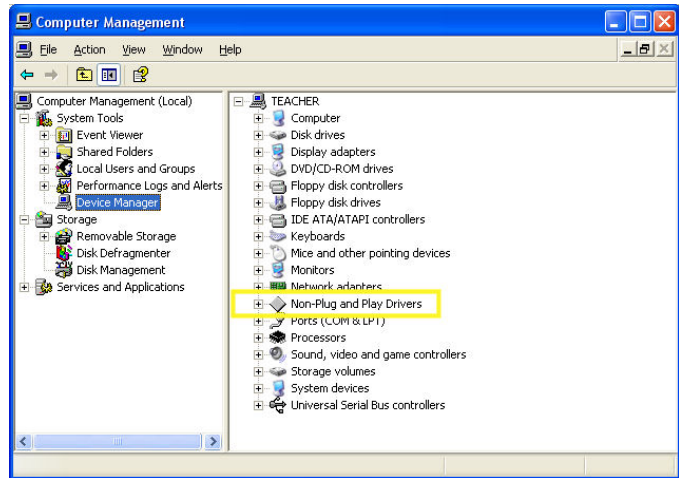


Next click on “View” in the menu bar at the top of the window and click on “Show Hidden Devices”.

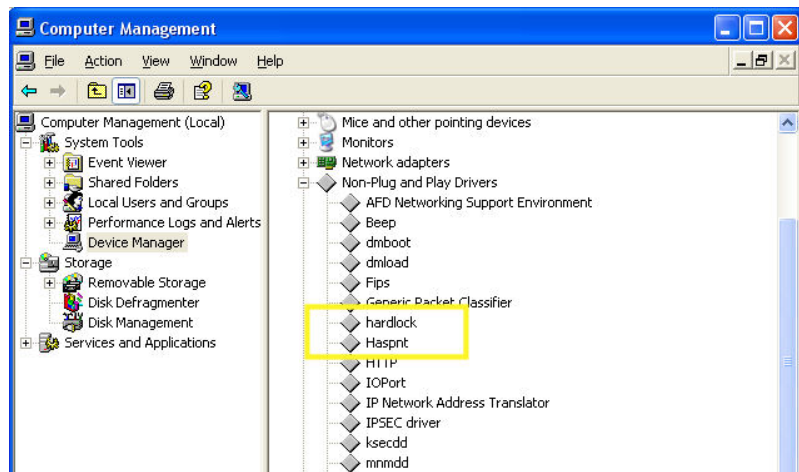


This should make the “Non-Plug and Play” devices visible in the menu on the right.

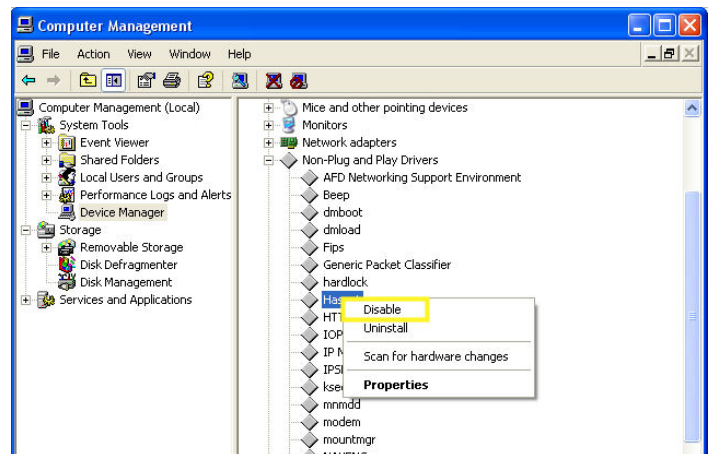
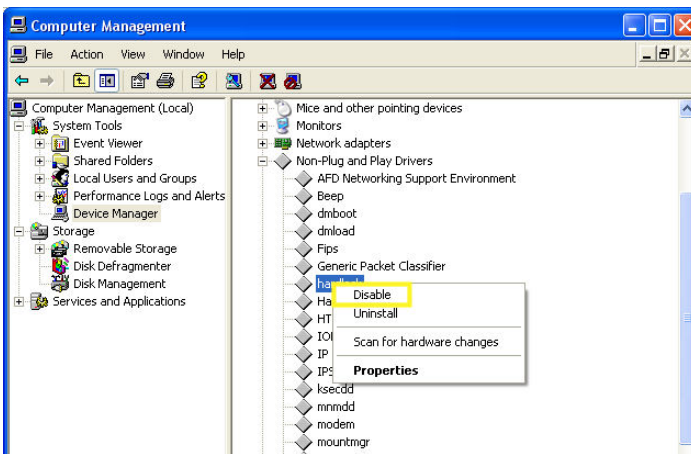
Click on the plus beside Non-Plug and Play to open the list of devices.



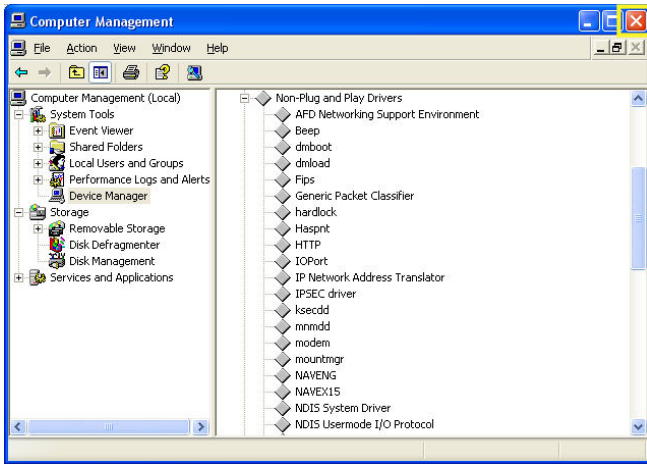
You should see “hardlock” and “Haspnt” in the list.



Right click on “hardlock” and click Disable in the pop-up menu. Then right click on “Haspnt” and click Disable in the pop-up menu.



Now you should exit out of the Computer Manager by clicking on the X button on the top right corner, and then restart your computer.



Once your computer has finished with the restart insert the CD into the drive.



When the Main Menu comes up click on Hasp Driver and then click on Remove Driver.

- Install FES™
- Install Visual TakeOff+™
- PSQL Workaroup
- **HASP Drivers**
- View Demos
- Update HASP License
- Install Vendor Documents
- Browse CD

- **Install Driver**  
Install HASP Driver.  
If an error is reported,  
you may have the driver  
setup incorrectly. Select  
the "Remove Driver"  
option, then try again.
- **Remove Driver**  
This will remove the HASP  
driver. Also removing  
drivers that are setup  
incorrectly.
- Back to Main Menu

While the driver is being removed you should see a window like this, and when the operation is complete a new window will pop up saying it was successful. Press the OK button to continue.



Now you should remove the CD again and restart your computer.



Once your computer has restarted insert the CD into the drive and when the Main Menu comes up click on Hasp Driver. Then click on Install Driver.

- Install FES™
- Install Visual TakeOff+™
- PSQL Workaroup
- **HASP Drivers**
- View Demos
- Update HASP License
- Install Vendor Documents
- Browse CD

- **Install Driver**  
Install HASP Driver.  
If an error is reported, you may have the driver setup incorrectly. Select the "Remove Driver" option, then try again.
- **Remove Driver**  
This will remove the HASP driver. Also removing drivers that are setup incorrectly.
- **Back to Main Menu**

While the driver is being installed you will see a window like before, and when complete the window will say it's successful. Press OK and your Hasp Driver will be installed properly.

